



VANGUARD FLOOR MOUNTED FUME HOODS

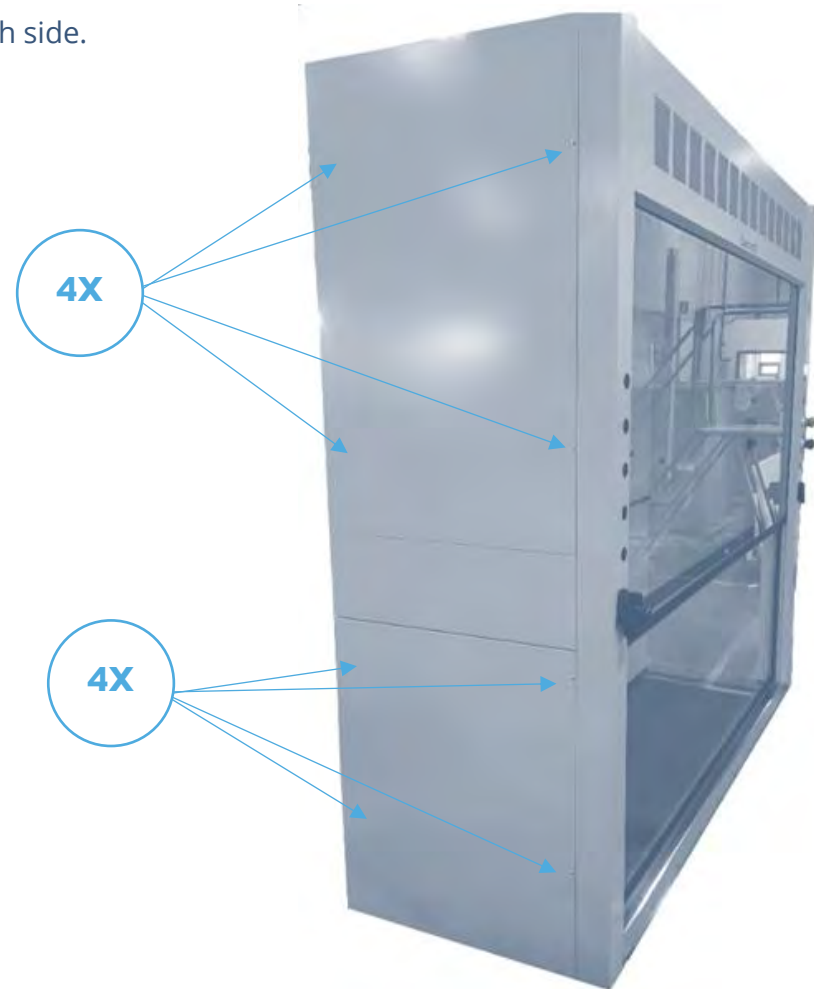
INSTALLATION MANUAL



Superior containment... even at low velocity

INSTALLING FLOOR MOUNTED FUME HOODS - STEP BY STEP

1. Remove the side panels by unscrewing 8 screws on each side.



2. Back Panel Assembly

- a. Place the rear panel upright as seen on the image.
- b. Place and hold still the panel upright 90 degrees from the ground.



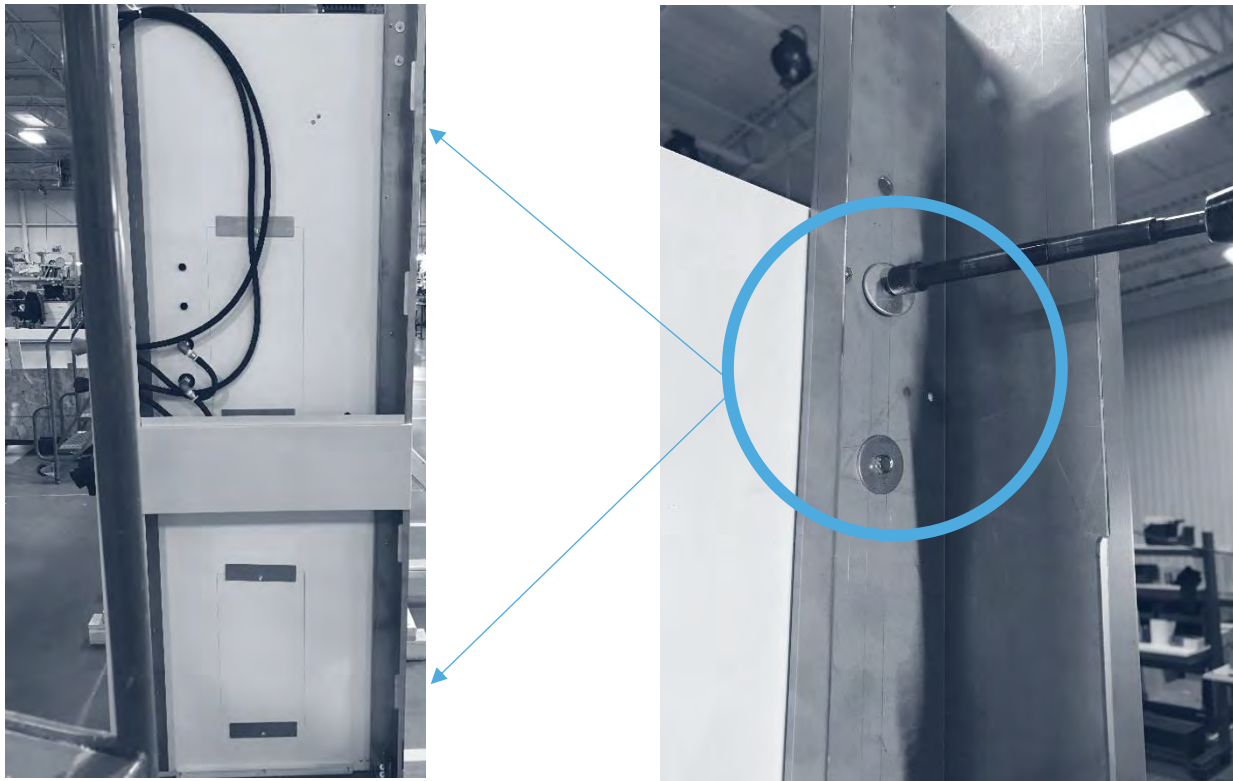
3. Side Panel Assembly

- a. Position the side panel upright to fix it to the back panel and screw it into place.
- b. Repeat this step for the left side panel.

B



- c. Place the right side panel against the back panel and screw into place as shown.
Repeat with the left side panel.

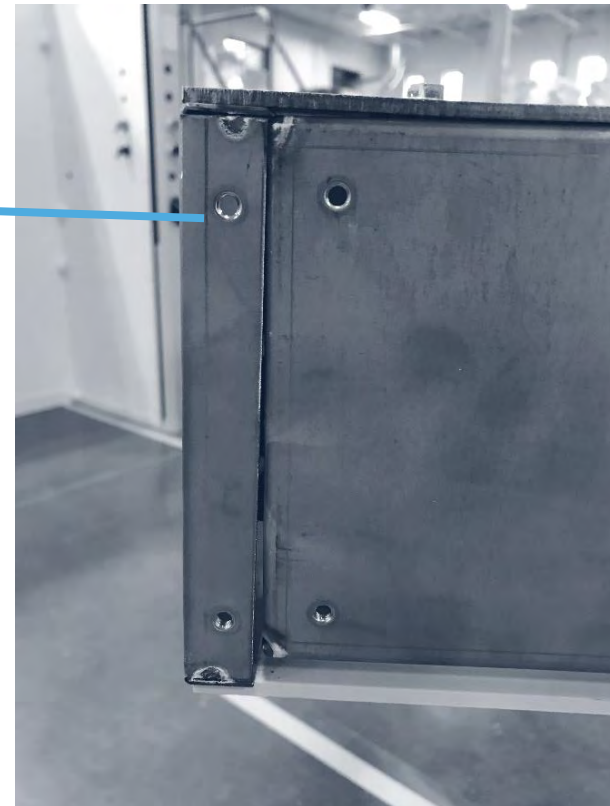


Using 5/16 ratchet socket

- d. Screw the right side panel using a Philipps #2 screwdriver
Repeat with left side panel.



4. Lower the top panel by aligning the screw holes and then screw.





Rear View



Right Side View

5. Interior panel assembly.

There are three (3) panels to install.



- a. Use the tie-down bridges to put the panel in place.
- b. Insert panel into position and screw it in place.
- c. Repeat with other interior panels.

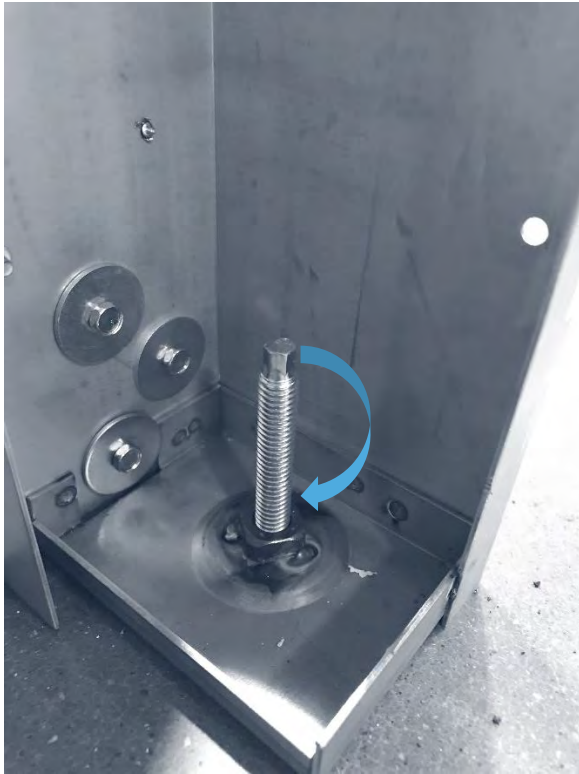
d. Insert the top panel at an angle then screw it.



6. Position door sill in front of the holes and screw into place. Repeat on the other side.



7. Level adjustment



Back Level Adjustment



Front Level Adjustment

8. Sash Glass Insertion

- a. Wrap the cable firmly into hand for safety handling. Lift the sash glass with appropriate lifting methods.
- b. Insert the glass wearing tag "GLASS #1" into the appropriate identified track.

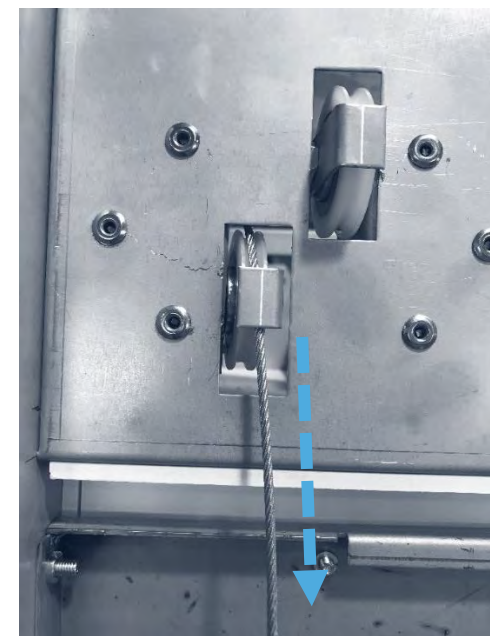
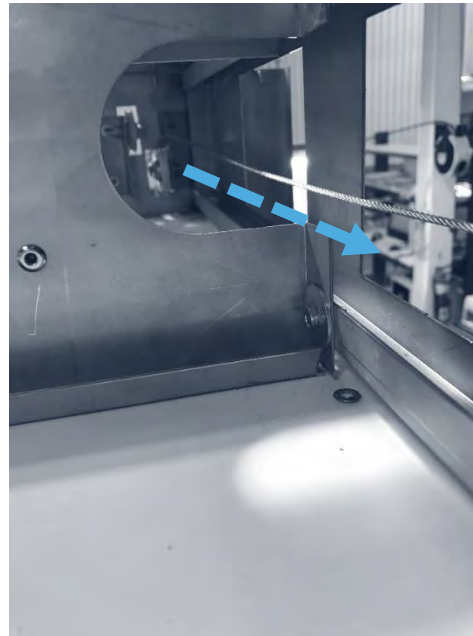
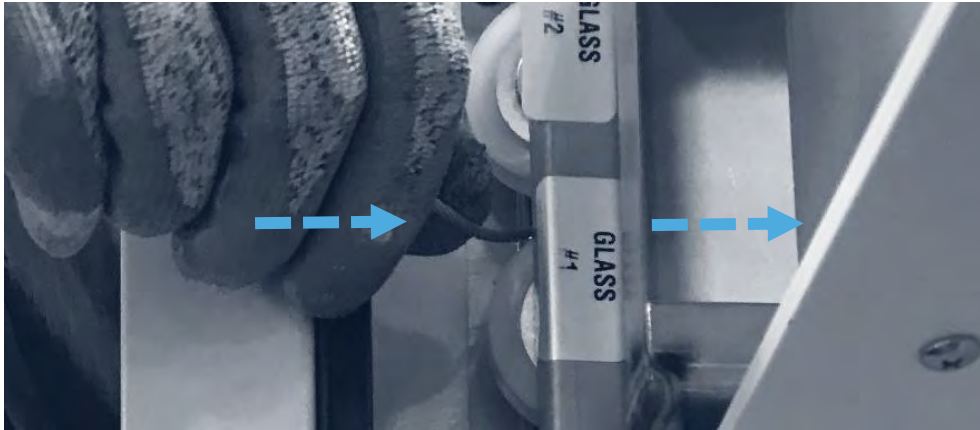


Here is what it should look like once "Glass #1" is in place.



9. Sash Cable Installation

- a. Glass #1: Steel cables must pass through a pulley. Use the properly identified pulley.



- b. Attach cable from "Glass #1" to counterweight labeled "Glass #1". Counterweight labeled #1 must be inserted into inside track at the rear of the hood.

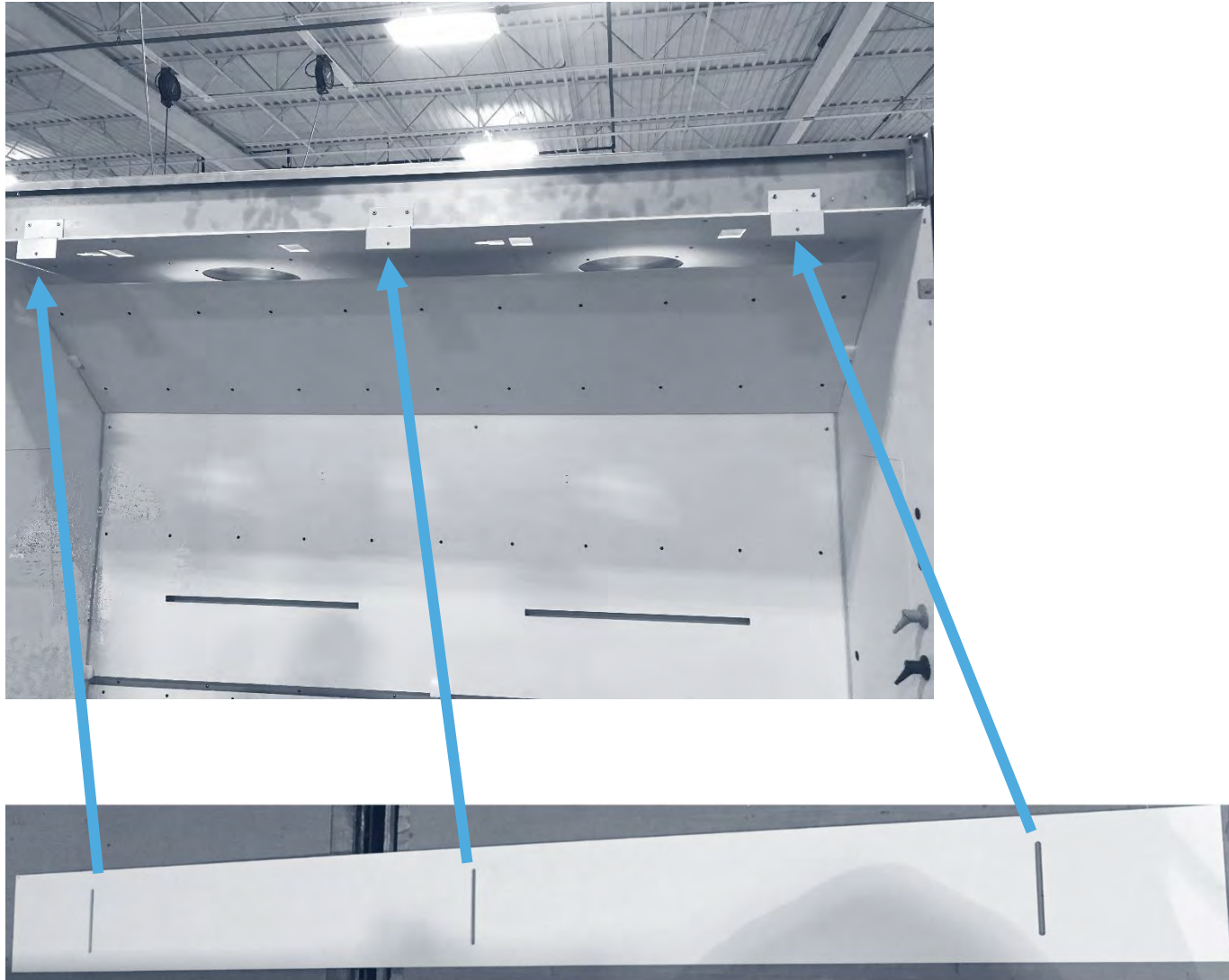


- c. Insert "Glass #2" into the appropriate identified track, handle side down.
- d. Follow steel cable instructions mentioned previously to insert cable #2 properly.

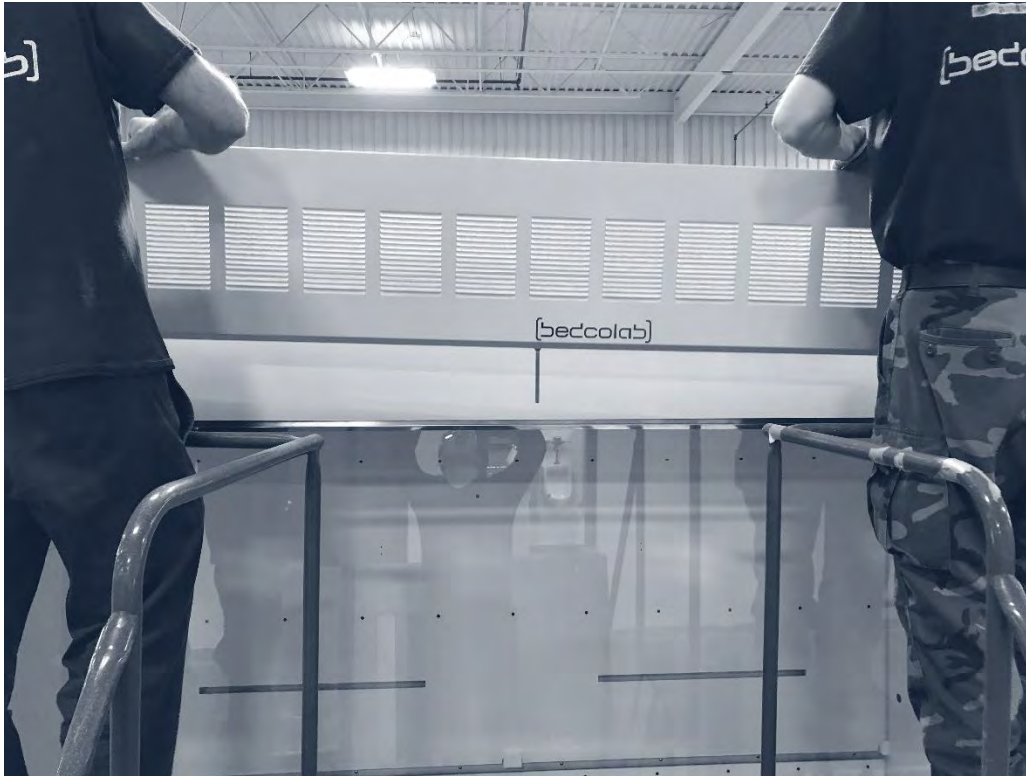
- e. Attach steel cable #2 to the counterweight labeled #2. Counterweight must be inserted into the left facing track.



10. Install the front panel deflector by screwing it in place, aligning screw holes and cutouts.



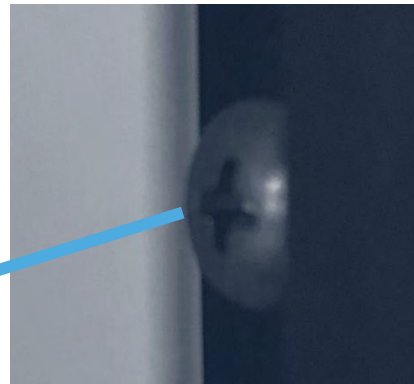
11. Hang the front facade panel on top of the deflector.



12. Install the side panels that you removed in step 1.

13. Sash Rail Adjustment

An adjustment tool have been provided to adjust sash friction. To do so, simply release tension in rail by loosening rail screws and move it to desired tension.



Adjustment tools



Installation Manual Vanguard Floor Mounted Fume Hoods

If you require any additional information, please contact the following addresses for prompt responses.

Supplier and distributor:

Bedcolab Ltd

2305 Francis-Hughes Avenue

Laval, Quebec, Canada

H7S 1N5

Telephone: 514-384-2820 or 1-800-461-6414

Fax: 514-384-9292

Web site: www.bedcolab.com

Email address: information@bedcolab.com

Manufacturer:

Bedco, division of Gerodon Canada Inc.

2305 Francis-Hughes Avenue

Laval, Quebec, Canada

H7S 1N5

Telephone: 514-384-2820 or 1-800-461-6414

Fax: 514-384-9292