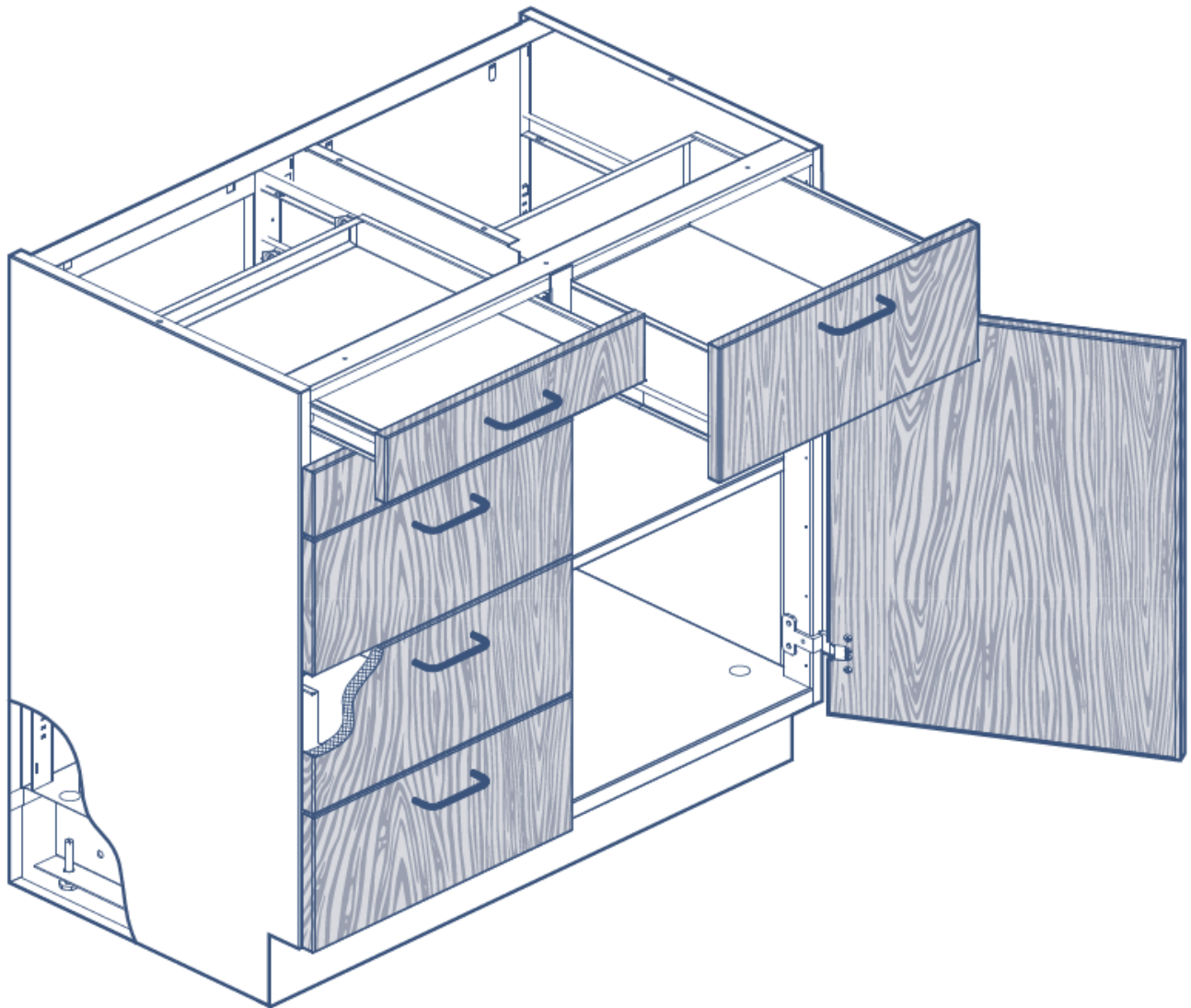




HARMONY CASEWORK AND ACCESSORIES

INSTALLATION MANUAL



Designed to last... built to last even longer

INSTALLING BASE CABINET

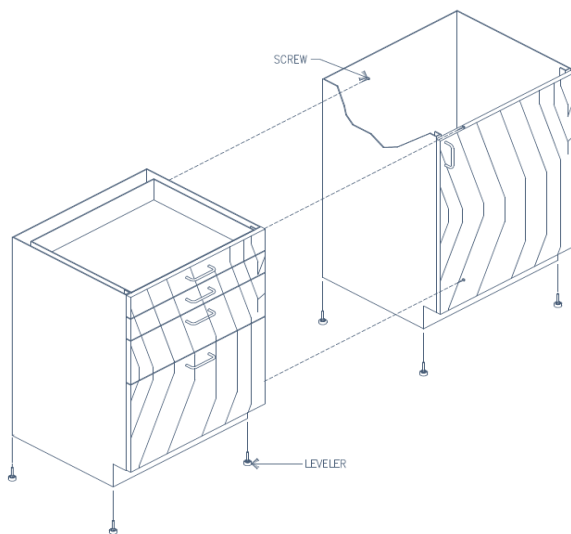
It is important to notice that all cabinet hardware such as wire pulls, pull screws and spacers, bottom cabinet caps and shelf clips are not installed on cabinets when they leave the factory. Only flush recessed pulls are installed on the cabinets before leaving the factory. You will find these components into a box with a red sticker with the indication "HARDWARE". The hardware box includes all required components for all shipped cabinets per Work Order. All screws required to secure cabinets and panels together and/or to walls are not supplied with the components.

To avoid having counter tops that are not perfectly leveled, row of base cabinets must be installed beginning from the highest point of the floor. Starting at the highest end, set cabinet in place according to the desired layout. Where service lines are to be run behind the base cabinets, make sure that the proper clearance is maintained between the unit and the wall as indicated on the shop drawings. It is important to note that back panels on most cabinets are removable from cabinet front for future access to service lines.

You first need to remove all shelves and/or drawers, noting their location for the re-insertion.

Next, you need to level the cabinets. Levelling bolts are provided beneath the press plugs located on the four corners of the base of each cabinet. Using a flat bladed screwdriver, adjust the four leveling bolt as needed. It is important that all 4 levelers are down to the floor TO AVOID CABINET DISTORTION.

Repeat the process for each cabinet. Once all units have been positioned and levelled, fasten them together using 12 mm (1/2") #8 self-drilling screws at top, bottom and rear of the cabinet if required.



A. LEVEL ALL BASE CABINETS BY ADJUSTING LEVELERS UNDER THE CABINET.

B. SCREW CABINETS TOGETHER BY USING THREE (3) SCREWS. (SEE SKETCH)

Note:

Levelers are accessible from inside of the cabinet.

- For drawer cabinet: please remove bottom drawer
- For shelf cabinet: please remove black plastic cap from bottom of the cabinet

Always level from high point to low point

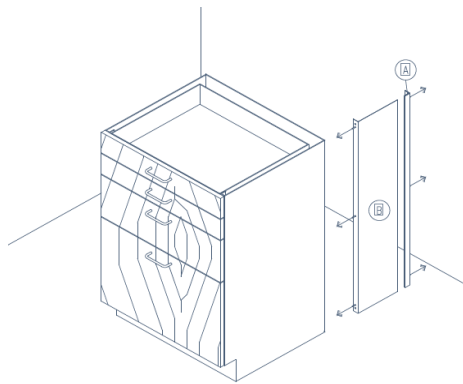
BASE CABINET FILLERS

End filler panel (EFP)

End filler panel consists of two parts: a flat steel panel with a formed brake on one long edge and a double mounting angle. EFP's are used to close off the pipe space at the end of a wall or island bench.

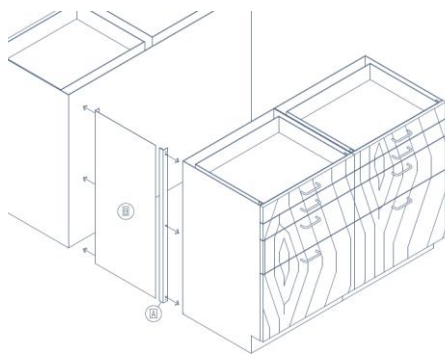
First secure the double angle vertically to the wall (for wall benches) or to the opposite cabinet (for island benches), so that the slotted portion is flush with the finished cabinet side and level with the top of the cabinet.

Slide the long edge of the panel into the angle and secure the brake to the opposite cabinet using three (3) 12mm (1/2") #8 self-drilling screws. If necessary, the width of the panel may be decreased by cutting along the unformed (straight) edge with a jigsaw before installing.



WALL BENCHES

- A.** SECURE DOUBLE ANGLE TO WALL.
- B.** SECURE FRONT FLANGED PANEL TO CABINET.
- C.** SLIDE CABINET WITH THE PANEL INTO POSITION INTO THE DOUBLE ANGLE.



ISLAND BENCHES

- A.** SECURE DOUBLE ANGLE TO ONE CABINET.
- B.** SECURE FRONT FLANGED PANEL TO THE OTHER CABINET.
- C.** SLIDE CABINET WITH THE DOUBLE ANGLE INTO POSITION ON THE PANEL ATTACHED TO THE OTHER CABINET.

Note:

1. Fillers should only be glued to Flammable cabinets (Holes into these cabinets will removed UL 1275 certification)
2. It is strongly recommended to install a wall angle at the back of the cabinets on all wall benches to properly support the counter tops.

BASE CABINET FILLERS

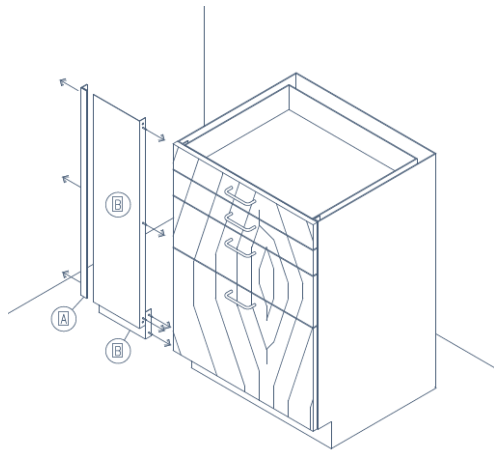
Front filler panel (FFP)

Front filler panels are supplied to fill a gap between a base cabinet and an adjacent wall or between two cabinets (as indicated on the shop drawings)

Each panel kit includes a flat face panel that matches the base cabinets with a return angle on one side, one 4" high base panel and one double angle. Over-sized filler panel might need to be cut on site to suit the space.

You first need to fasten the top and bottom panel flanged side to the cabinet with the panels flush with the cabinet front.

You then need to screw a double angle to the other cabinet or the wall and slip the cut edge of the top filler panel into the slot in the angle.



WALL BENCH

- A.** SECURE DOUBLE ANGLE TO CABINET OR WALL.
- B.** SECURE FRONT FLANGED PANEL AND BASE PANEL TO OTHER CABINET OR WALL.
- C.** SLIDE CABINET WITH THE TWO PANELS INTO POSITION WHERE THE FRONT FLANGED PANEL SLIPS INTO THE DOUBLE ANGLE.

BASE CABINET FILLERS

Corner filler panel (CFP)

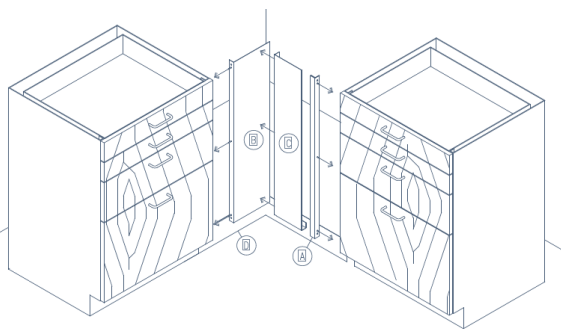
Where two (2) elevations of base cabinets meet at an inside corner, a provision must be made for at least 50mm (2") clearance both ways to permit drawers to operate freely. An inside corner is also a good spot to take up any slack in a wall-to-wall assembly. Corner filler panels fulfill both purpose conditions

One CFP unit consists of two (2) panels with a return angle on one side, one (1) double angle and one toe-kick filler angle that is used to cover the base opening.

Before starting the installation of the CFP, make sure that the cabinets are at their final position, properly leveled and screwed together with no gaps. Using 12mm (1/2") #8 self-drilling screws, first secure one panel to the front side of one base cabinet. Then the other panel is cut to size and slice in to the double angle that was previously fixed to the other cabinet front side.

One panel filler shall overlap the other filler, leaving at least 50mm (2") x 50mm (2") of filler exposed at the corner. Fasten the fillers together using 12mm (1") #8 self-drilling screws.

The remaining hole at the floor is then closed off with the toe kick filler. Secure the front of the toe kick filler by using 12mm (1/2") #8 self-drilling screws.



WALL BENCHES

- A.** SECURE DOUBLE ANGLE TO CABINET.
- B.** SECURE FRONT FLANGED PANEL AND BASE PANEL TO OTHER CABINET.
- C.** SECURE FRONT FLANGED PANEL (C) (WITH RETURN AT BOTTOM) TO FRONT FLANGED PANEL (B).
- D.** SLIDE CABINET WITH DOUBLE ANGLE INTO POSITION WHERE THE FRONT FLANGED PANEL SLIPS INTO THE DOUBLE ANGLE.
- E.** PLACE BASE FILLER PANEL IN PLACE WHERE IT COVERS THE VOID BETWEEN CABINETS.

KNEE SPACES

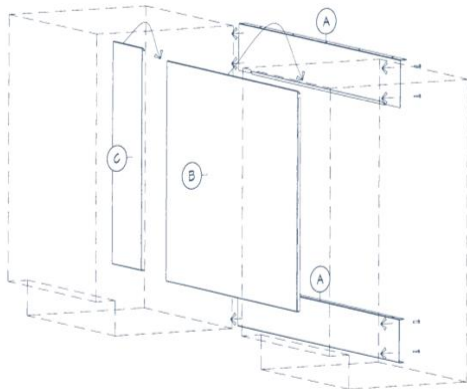
Knee space panels (CSP)

These service cover panel consists of three (3) pieces: a top and a bottom back rails and a closing panel.

To install the knee space service panels, you first need to screw the top (flush with the top of the cabinets/gables) and the bottom rails to the rear of the adjacent cabinet and/or gable by using four (4) 12mm (1/2") #8 self-drilling screws for each panel (two (2) at each end).

Then you hang the closing panel on the top panel angled catch. The panel kit is supplied with magnets that should be installed on the panel bottom back to prevent rattling.

For any odd spaces (other than 6" increment) you need to hang an additional 8" extension panel on top of the closing panel that will enclose the opening.



KNEE SPACE PANELS

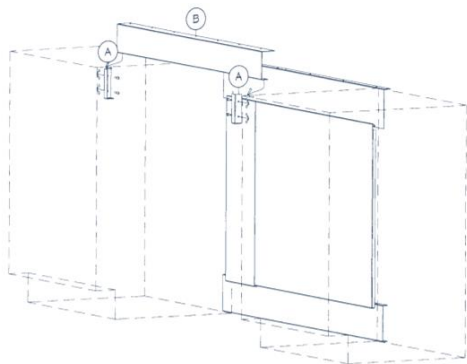
- A.** SECURE THE TOP AND BOTTOM RAILS TO THE REAR OF CABINETS (TOP RAIL TO BE FLUSH WITH TOP OF CABINETS).
- B.** HANG CLOSING REMOVABLE PANEL ON THE TOP PANEL'S ANGLED CATCH.
- C.** HANG THE 8" EXTENSION PANEL ON CLOSING PANEL. (IF REQUIRED)

KNEE SPACES

Apron

To install a knee space apron, screw the end supports on the top front side (flush with front and top of cabinet and/or gable) of the lateral cabinets or gables.

Cut the apron to the required size (as per site conditions). Drop the apron into the end supports and secure them from the bottom of the supports by using two (2) 12mm (1/2") #8 self-drilling screws (one (1) at each end).



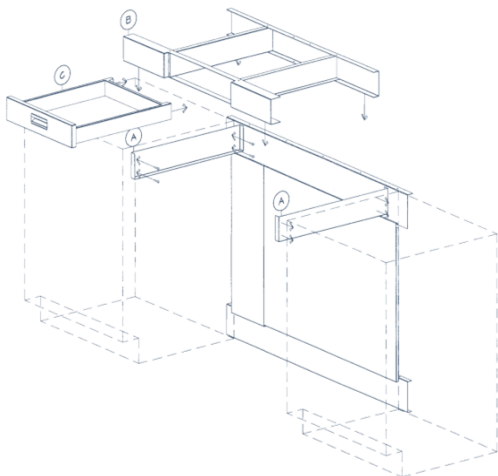
APRON

- A.** SECURE THE END SUPPORTS ON THE TOP FRONT SIDES (FLUSH WITH THE TOP OF THE CABINET/GABLES) OF LATERAL CABINETS/GABLES.
- B.** PLACE THE APRON INTO THE SUPPORTS AND SECURE IT BY THE BOTTOM OF THE SUPPORT

Apron with drawer

To install a knee space apron with drawer, remove the drawer, secure lateral panels to the adjacent cabinets and/or gables (flush with top of cabinet and/or gable) by using four (4) 12mm (1/2") #8 self-drilling screws on each panel.

Drop the drawer assembly into place. If it is necessary to reduce the length of your knee space apron with drawer, it may be cut down (up to a maximum of 3" each side) to suit the opening.



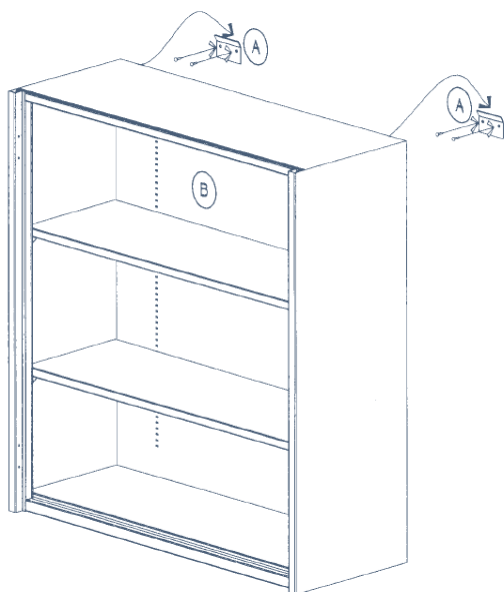
APRON WITH DRAWER

- A.** SECURE THE LATERAL PANELS TO ADJACENT CABINET(S) OR GABLE(S).
- B.** PLACE DRAWER ASSEMBLY INTO POSITION AND SECURE TO LATERAL PANELS FROM UNDERNEATH.
- C.** SLIDE DRAWER INTO DRAWER ASSEMBLY

INSTALLING WALL CABINET

Extra care should be taken in selection of fasteners when installing wall cabinets, due to the weight factor and existing wall construction.

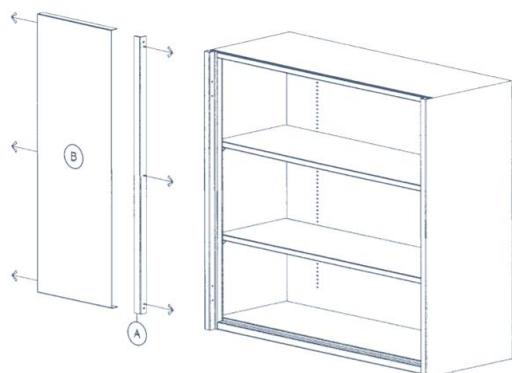
Wall cabinets are usually installed before the base units to avoid having to climb over benches. For cabinets with sliding doors, it is recommended that the doors be removed before installation. Determine the correct height for the unit to be hung, taking care not to conflict with any service fittings to be installed below. Mount strapping in an appropriate location on the wall blocking. When strapping is safely secured to the wall, lift cabinet into position, level and secure to strapping with a minimum of two fasteners per strap.



WALL CABINET

- A.** DETERMINE CORRECT HEIGHT FOR THE WALLCASE.
- B.** SECURE MOUNTING BRACKETS TO WALL IN THE APPROPRIATE LOCATION ON THE WALL.
- C.** WHEN BRACKETS ARE SECURED. LIFT CABINET INTO POSITION OVER THE BRACKETS.
- D.** REMOVE BOTTOM SHELF AND FIX THE CABINET BOTTOM TO THE WALL USING THE 2 PERFORATIONS PROVIDED INTO THE BOTTOM BACK OF THE CABINET. PUT BACK THE BOTTOM SHELF.
- E.** SECURE CABINETS TOGETHER WITH 12 mm (1/2") #8 SELF-DRILLING SCREWS AT TOP (AS HIGH AS POSSIBLE) AND BOTTOM FRONTS (UNDER THE BOTTOM SHELF)

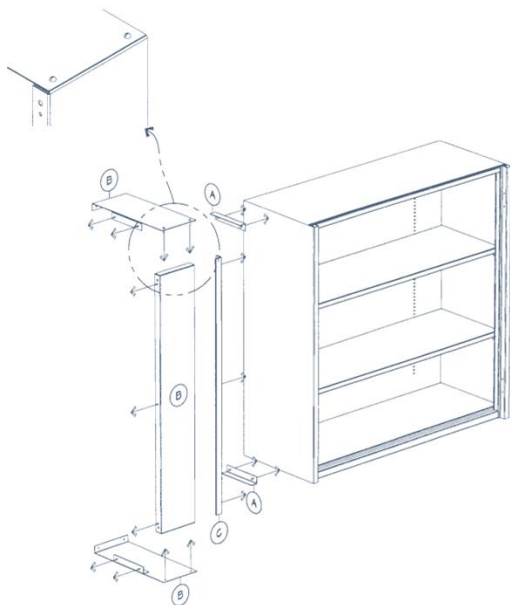
WALL CABINET FILLERS



WALL CABINET FRONT FILLER PANEL

- A.** SECURE DOUBLE ANGLE TO WALL.
- B.** SLIDE IN THE DOUBLE ANGLE AND SECURE THE FRONT FLANGED PANEL TO WALL CABINET.

WALL CABINET FILLERS



WALL CABINET SIDE FILLER PANEL

- A.** SECURE THE VERTICAL DOUBLE ANGLE TO WALL AND TWO SMALL HORIZONTAL DOUBLE ANGLES TO WALL CABINETS
- B.** CUT TO SIZE AND SLIDE IN THE FRONT FLANGED PANEL TO DOUBLE ANGLE INSTALLED ON WALL
- C.** SECURE DOUBLE ANGLE TO WALLCASE
- D.** SECURE THE TOP AND BOTTOM PANELS (SEE BLOW UP) TO THE MOUNTING ANGLES AND FLANGED FRONT PANEL USING 12MM (1/2") #8 SELF-DRILLING SCREWS

FINAL INSPECTION

1. Check that all pieces of hardware such as door catches, striker plates and rubber bumpers are installed and operating properly.
2. Adjust catches if required.
3. If a cabinet has not been leveled properly, it may twist slightly out of square, causing the doors and drawers to stick. Make sure that all four levelers are tight to the floors.
4. Applying a dab of lubricating grease such as Vaseline to the roller bearings of the drawer runners will ensure free, quiet operation of the drawers.
5. Occasionally a stainless steel counter top will sit low on the cabinets causing drawer or door tops to catch under it when opened. Shim top by inserting a thin wooden wedge or a steel plate between the top and the cabinet frame.
6. Cabinets that have been scratched or nicked during shipping or installation may be easily touched up. Bedcolab supplies small quantities of color-matched enamel for this purpose.

TECHNICAL SERVICES

If you require any additional information, please contact the following addresses for prompt responses.

Supplier and distributor:

Bedcolab Ltd
2305 Francis-Hughes Avenue
Laval, Quebec, Canada
H7S 1N5
Telephone: 514-384-2820 or 1-800-461-6414
Fax: 514-384-9292
Web site: www.bedcolab.com
Email address: information@bedcolab.com

Manufacturer:

Bedco, division of Gerodon Canada Inc.
2305 Francis-Hughes Avenue
Laval, Quebec, Canada
H7S 1N5
Telephone: 514-384-2820 or 1-800-461-6414
Fax: 514-384-9292